



HARLESTON SANCROFT  
ACADEMY

## Harleston Sancroft Academy celebrates OFSTED success

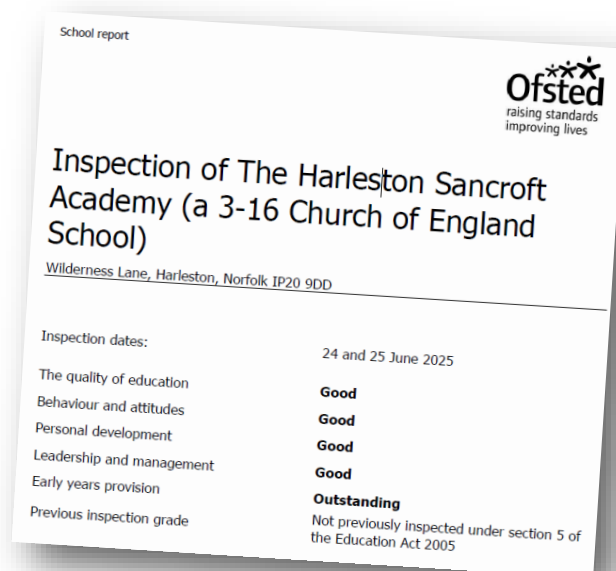
**On 24th-25th June Harleston Sancroft Academy was inspected by Ofsted. The final report was published on 1st September and we are delighted to announce that the school was judged Good in all 4 key categories and their Early Years provision was graded as Outstanding.**

Headteacher Rob Connelly commented, *"The Ofsted inspection team recognised many of the strengths that make our school community so unique and special. They noted how pupils 'relish opportunities to live life in all its fullness' and praised how our 'caring, supportive community enables children to feel happy, safe, and valued from Nursery through to Year 11'."*

*"The report highlights the extensive work that has been undertaken in developing a broad and ambitious curriculum that is planned from Early Years through to Year 11 in all subjects, coupled with the high expectations that we have for all members of the community."*

*"The inspectors were impressed by the calm, purposeful learning environments and children's high levels of engagement and independence, highlighting the excellent behaviour and relationships across the school. In particular, the inspectors noted the calm, respectful atmosphere throughout the school and praised our 'connect before we correct' approach, which reflects our values-led ethos."*

*"The inspection team recognised the clear vision and strategic approach of school leaders, supported excellently by St Benet's MAT, in addressing areas for development and building on our strengths, acknowledging the hard work we have undertaken to address historical challenges, particularly in the primary phase, and were pleased to see the positive impact of our efforts."*



Headteacher Rob Connelly with students from the primary and secondary phases

*"The inspection has confirmed that when education is rooted in strong Christian values, children flourish academically, personally, and spiritually. Our commitment to helping every child 'live life in all its fullness' - both in their learning and their character development, continues to bear fruit."*

St Benet's CEO, Sam Nixon, added, *"We're delighted that this Ofsted result reflects the hard work and dedication put in by the staff at Sancroft and the support offered by the Trust. Staff, parents and students can be very proud of this outcome."*

**B-Comms is the fortnightly newsletter for Church of England schools who are Members of St Benet's Multi Academy Trust:**

Acle Primary, Alburgh with Denton Primary, Catfield Primary, Dickleburgh Primary & Pre-school, Diss Junior Academy, Diss Infant Academy & Nursery, Garboldisham Primary, Happingham Primary, Harleston Sancroft Academy, Hickling Infant, Little Plumstead Primary, Morley Primary, Newton Flotman Primary, Pulham Primary, Scole Primary, St Mary's Junior, St Mary's Primary, Sutton Infant and Tacolneston Primary.

## St Benet's says thank you and farewell to our longstanding

Chair of Trustees, Fred Corbett, as he stood down as Chair at the end of July after 7 years of leading the Board of Trustees.



Fred originally set up the Diocese of Norwich's first Academy Trust, DNEAT, and chaired that body until transferring to become Chair of St Benet's MAT when it was created in 2018.

He has been involved in school governance for over 35 years and has over 50 years experience in education as a Teacher, Lecturer in Higher Education, Ofsted Inspector, Education Adviser and Deputy Director of Norfolk Children's Services until 2012.

Fred is an adviser to the Catholic Diocesan Education Board, Member of the St John's and Our Lady of Walsingham Multi Academy Trusts and is a governor at Thorpe St Andrew School and Sixth Form.

Fred's interests include school improvement, mathematics, the humanities, local history and environmental education and he has degrees in Geography and Education, Masters degrees in

Curriculum Studies and History and in 2024 was awarded a PhD in military landscape history from the University of East Anglia.

In addition to this he is a keen amateur painter, an enthusiastic traveller and a very busy Grandfather!

We have been incredibly lucky to have Fred as our Chair, as he has tirelessly supported St Benet's schools over the last 7 years, visiting school events, attending Ofsted inspections and offering expert support and guidance to our Headteachers and Central Team.

We wish Fred every success and happiness for the future, and thank him for the integral role he has played in making St Benet's the Trust that it is today.



## Swallowtail Arts Festival success

**On 16th July, families from all three schools in the Swallowtail Federation joined together for our first Swallowtail Arts Festival.**

This was planned by staff across the schools, with a focus on providing an opportunity for our pupils to perform together and celebrate their artistic talents.

In the run-up, children across the schools came together for after school clubs to learn dances. An art gallery (seen right) was set up to showcase the amazing work produced by the children in their CUSP lessons throughout the year.



At each school, the same songs were learnt and the feeling of awe as the children were able to perform these together was truly magical.

The sun shone, attendance was phenomenal and it really allowed us to finish our school year on a high. Thanks to a successful application to the **Immeasurably More Fund**, St Benet's MAT funded the hire of a professional PA system. This really was the icing on the cake, allowing the whole event to feel professional and special for everyone.

Needless to say, the event is now going to become part of our annual calendar.

**Natalie Butcher**  
Ex-



## First Immeasurably More award announced

**We are delighted to announce the first recipient of an Immeasurably More award.**

St Mary's Junior Academy in Long Stratton applied for the Immeasurably More Than Just a Curriculum category, and after assessment by St Benet's CEO, Sam Nixon and Improvement Director, Paul Seeman, their application was deemed, "... *meaningful, regularly planned and impactful and is of course of an aspirational nature - as your support for other schools already has shown*".

Headteacher Laura Richardson commented, "We're thrilled and deeply honoured to receive the **"Immeasurably More Than Just a Curriculum"** award!"



*"This recognition means so much to our entire team, who spend a lot of time thinking deeply about opportunities beyond the curriculum trips. We have mapped curriculum, enrichment and sporting trips across the whole year and ensure all children receive one fully funded trip per year to promote inclusivity."*

*"Children have had the opportunity to experience raft building, sailing and tubing which provides an holistic and enriching educational experience that goes beyond traditional academics."*

*"We believe in fostering creativity, critical thinking, teamwork and a love for learning that will prepare our students for life's many challenges."*

*"This award inspires us to continue innovating and making a meaningful impact on the lives of our learners."*

**Congratulations to Headteacher Laura Richardson and her team, and we hope to see new Immeasurably More applications from other schools in the new school year.**

**Two of the Trust's key priorities for 25-26 are shared with you below by the Trust Improvement Leads.**

## Trust Priorities | CPD 2025 / 2026

### Key Priority 1

Improve end of Key Stage 2 and Key Stage 4 outcomes in core subjects, to be at least in line with national averages

#### Trust Inset Disaggregated

*Focus on our Trust Teaching and Learning*

*Principle of Ambition through the domain of Writing*

#### **Autumn - Ambition**

A1 - Reading and task 40 mins

A2 - Recorded Webinar 50 mins plus a task 30 mins

#### **Spring - Ambition**

Sp1 - Reading and task 40 mins

Sp2 - Recorded Webinar 50 mins plus a task 30 mins

#### **Summer - Ambition**

Su1 - Reading and task 40 mins

Su2 - Recorded Webinar 50 mins plus a task 30 mins

#### Trust Improvement Leads (TILs)

**Our CPD approach is through:**

Coaching  
Modelling  
1:1 bespoke support  
Termly updates



Diocese of Norwich  
St Benet's  
Multi Academy Trust

### Key Priority 3

Improve the quality of education in all schools through high-quality professional development and instructional coaching

#### Focus Groups

**These are one per term:**

- ⇒ English—Recorded PPT + 1/2 school visit
- ⇒ Maths—Recorded PPT + 1/2 day school visit
- ⇒ SEND— F2F Network day
- ⇒ EYFS— Visit a school (Nov) + recorded PPT
- ⇒ RSL—Live online network x2
- ⇒ DSL—Live online network x2
- ⇒ RE—Live online network x2

These provide up-to-date information, collaboration and time to complete leadership work with support

Oracy and Inclusion will be woven through all our networks as our Golden Threads.

| Webinars |

| TILs |

| Networks |



## New primary MIS across St Benet's

We are pleased to announce that a new Trust-wide primary Management Information System is being rolled out to all St Benet's schools from September 2025.



The Trust Central Team and a group of Headteachers, supported by Rosemary Ison from DoNESC, went through a lengthy appraisal process to identify the best system to replace Pupil Asset and Scholar Pack.

After much testing, [Juniper Education](#) were awarded the contract as the providers of our new MIS. They have started the roll-out and training process this month. The Trust has agreed that Pupil Asset will run concurrently with Juniper MIS for a number of months whilst the new software is embedded in our schools.

Two online training sessions on 'How to use SONAR reporting and tracking' will be held, the first was held on Thursday 11th September and the second will take place on **Tuesday 30th September**, both at 3.45-4.45pm. Sessions will be recorded and made available afterwards for those unable to attend.

The training will cover key areas including viewing and filtering pupils, adding bespoke pupil groups, inputting assessment data, understanding the Point in Time assessment model, exploring key attainment and progress reports and how to access help and support.

We encourage anyone who will be using MIS to sign up for this training, please contact your Headteacher in the first instance.

We are also preparing a phased rollout implementation plan for the Juniper MIS software. This will involve in-person and online training sessions for admin staff members which will be scheduled a number of weeks ahead of your school's actual rollout date.

Further information in respect of the MIS rollout will be shared with Headteachers in the coming weeks as details are firmed up.

## Training/CPD events for the next half-term

Week commencing	Monday	Tuesday	Wednesday	Thursday	Friday
<b>22.09.25</b>	Diss & Scole ARM, 09.30-11.30;  Collective Worship Workshop, 15.30-17.00 online	Beacon Fed ARM, 09.30-11.30;  T&M Fed ARM, 14.00-16.00;  CUSP Primary Science Leads, 15.45-16.45 online	Swallowtail Fed ARM, 09.30-11.30	<b>CANCELLED</b> <del>Live Team Coaching Session at Sancroft;</del>  CUSP Early Maths Leads, 15.45-16.45 online	AwD ARM, 11.00-12.30
<b>29.09.25</b>	CUSP Primary History Leads, 15.45-16.45 online	SEND Network, 09.15-16.00;  Juniper Sonar Training Session, 15.45-16.45 online	Leaders' Forum at OH, 09.00-14.00	Christianity as a Global World Faith - free Diocesan training, 16.00-17.00 online;  CUSP Primary Geography Leads, 15.45-16.45 online	
<b>06.10.25</b>		RE Network;  CUSP Primary Art Leads, 15.45-16.45 online	LA Data Support: Provisional Results & KS2 QLA Session at OH, 13.00-16.00	RSL Network, 15.40-16.40 online;  Christianity as a Global World Faith - free Diocesan training, 16.00-17.00 online;  CUSP Primary DT Leads, 15.45-16.45 online	
<b>13.10.25</b>				Christianity as a Global World Faith - free Diocesan training, 16.00-17.00 online;  CUSP Primary Music Leads, 15.45-16.45	

### Key:

ARM—Academy Review Meeting

OH—Orchard House NR20 3LR

RSL—Raising Standards Leads



## Diocesan Prayer Diary

The Diocese of Norwich have a Prayer Diary, which can be accessed [here](#).

The Church of England have a Time to Pray website [here](#).

## Central Team Contact Details

The Diocese of Norwich Education Team (St Benet's, DNEAT, DoNESC) are based at Orchard House, Hall Lane, East Tuddenham, Norfolk NR20 3LR. This is also the registered address for St Benet's MAT.

The central phone number for St Benet's is 01603 550147 or you can email the Central Team via [info@stbenets.org](mailto:info@stbenets.org).



## Press & PR

Please contact 01603 550147 or [info@stbenets.org](mailto:info@stbenets.org) with any press/media enquiries.

## Diocesan Communications



Footprints magazine and Flourishing Together are circulated to all Diocesan schools. The latest editions can be read [here](#).

If you would like your school to be featured in either please contact Jodie Ballard, PA to the Diocesan Director of Education, at: [jodie.ballard@dioceseofnorwich.org](mailto:jodie.ballard@dioceseofnorwich.org).

It is the responsibility of the Diocesan Board of Education to oversee the strategic direction for all schools and academies within the Diocese of Norwich. That's 107 schools in total across St Benet's, DNEAT and LA-maintained schools. The DBE has just published its next Strategic Plan covering the period 2024-2030. We encourage you to have a look [here](#).

## Vacancies

For vacancies at St Benet's MAT please visit: [www.stbenets.org](http://www.stbenets.org).  
Please email your vacancies to: [hr@donesc.org](mailto:hr@donesc.org).





## DoNESC News - Safeguarding update

### Speak Out Stay Safe Campaign

The NSPCC Speak Out Stay Safe Campaign is resource of assemblies (plug and play), lesson plans and also the option of booking a workshop for a volunteer to come out and speak to the children in the school. The NSPCC aims to have this delivered on a bi-annual basis. We have a representative from the NSPCC working with Norfolk Schools where the take-up is around 40%. Our Trusts are higher but we are aiming to get to 100%. If you have not used this resource in the last 2 years then please see this link for more information and to sign up:

[Speak out Stay safe programme | NSPCC Learning](#)

A representative will also be attending our next DSL Network meeting on the 18<sup>th</sup> September to share more information.

### EHAP (Early Help Assessment & Plan) Best Practice Training

Laura at St Mary's Junior is hosting a session with the local authority on running EHAPs which includes:

- Genogram and Family Networking
- Worry Statement, Goals and Scaling; Further information and practice to embed analysis
- Safety planning
- Mental Health Wishes and Feelings
- Words and Pictures explanation of situation/professional involvement

There are limited spaces but if you are interested please contact Laura directly as she will liaise with interested parties on a date and time that works for everyone:

[lrichardson@stmarys.stbenets.org](mailto:lrichardson@stmarys.stbenets.org)

### DSL Update Training

If you require a DSL update then we have another session booked on 6<sup>th</sup> November online between 9.00am-12.00noon.

Please email Louise to book, the cost will be £40 instead of directly with the LA for £80:

[louise.veeren@donesc.org](mailto:louise.veeren@donesc.org).

### Start of the Year Training

Ensure that the staff in your school have read and understood the relevant sections of KCSIE that apply to their role, they have attended annual school training and that they have completed the Prevent awareness or Prevent refresher. [Tell us about you | Prevent duty training](#)

## DoNESC News - Helpdesk

So that your queries to the Central DoNESC team can be dealt with as quickly and efficiently as possible, please direct your queries and questions via the Helpdesk.

All areas of the Helpdesk are looked after by more than one person so it will be seen quickly and picked up. If you email, there are chances that it could be missed due to holidays and sickness.

The exception is for Safeguarding. Please direct safeguarding queries to Louise Veeren ([louise.veeren@donesc.org](mailto:louise.veeren@donesc.org)) or call 01603 550151.





The Helpdesk is also your easy 'go to' place for:


- ⇒ Payroll Calendar
- ⇒ Academies Handbook
- ⇒ OfficeXpress SLA
- ⇒ DoNESC SLA

If you have recently been moved to the Cloud and been issued with a new email address, please contact Wendy Allsop ([wendy.allsop@donesc.org](mailto:wendy.allsop@donesc.org)) with your new email address so that your Helpdesk access can be updated over the coming weeks.


## OfficeXpress Catalogue

Please find below the new OfficeXpress Catalogue, which has been slightly updated to include licenses for Chromebooks and a robust case for iPads. Reminder – you will need a PO number when you send your order to OfficeXpress.







**HP 250 G10 Notebook**  
Intel Core i5, 15.6" / up to 4.8 GHz, Windows 11 Pro, Intel Iris Xe Graphics, 16 GB RAM, 256 GB SSD / M.2, IPS 1920 x 1080 (Full HD)  
**£465.00**



**Lenovo 100e Chromebook Gen 4**  
MediaTek Kompanio 520, 4 GB RAM, 32 GB eMMC, UK ChromeOS Management Licence included  
**£221.00**



**Apple Gen 11 iPad with Basitask Case**  
Wi-Fi 128GB, Silver  
**£274.00**



**Promethean LX Interactive Audio Visual Panel**  
75" **£1,498**  
65" **£1,298**

Price includes the installation and termination point





**Lenovo ThinkCentre M70q Gen 5 Mini PC**  
Intel® Core™ i5 E-14400T, 16 GB, DDR5-SODIMM, 512 GB SSD, Windows 11 Pro, Black  
**£484.97**



**Viewsonic VA220-H Computer Monitor**  
1920 x 1080 pixels, Full HD LED, Black  
**£65.00**

Claim up to **£100.00** cashback\*

**Ready to order?**

Click the PDF icon to download an order form and return to Daniel Molineux at:  
[dmolineux@officeexpress.co.uk](mailto:dmolineux@officeexpress.co.uk)



\*Claim up to £100.00 cashback for Chromebooks and up to £100 cashback for desktops and monitors. Available on qualifying trade-in items only.

## DoNESC News - quick IT reminders

- Always log your IT queries on the OfficeXpress Support Desk in the first instance, rather than contacting an individual
  - ⇒ [support@officexpress.co.uk](mailto:support@officexpress.co.uk)
  - ⇒ Tel: 0115 914 4140
  - ⇒ Web portal: [help.supporting.it.co.uk](http://help.supporting.it.co.uk)

### Make sure that you shut your laptop down correctly every time you finish for the day

Shutting down a laptop might seem basic, but doing it properly ensures your system stays healthy and your data stays safe. Here's a clear breakdown of the most effective methods, whether you're using a mouse, keyboard shortcuts, or dealing with a frozen screen.



#### Standard Shutdown (Using Mouse)

1. Click the **Start Menu** (Windows icon)
2. Select the **Power icon**
3. Choose **Shut down**

This is the most common method and works well when everything is functioning normally.



#### Keyboard Shortcuts for Quick Shutdown

If you prefer speed or your mouse isn't working, these shortcuts are lifesavers:

1. **Alt + F4:**
  - o Close all open windows
  - o When you're on the desktop, this opens the shutdown dialog
  - o Select **Shut down** and press **Enter**
2. **Ctrl + Alt + Delete:**
  - o Opens a menu with a power icon in the bottom-right corner
  - o Use arrow keys to select **Shut down**
3. **Win + X - U - U:**
  - o Opens the quick access menu
  - o Press **U** twice to shut down



#### If Your Laptop Is Frozen

When your screen is unresponsive:

- Hold the **power button** for 5-10 seconds until the laptop powers off
- This is a last resort and should be used only when other methods fail



## DoNESC News - Governance policies

The following policies have recently been reviewed, updated and approved:

- **HR05 Recruitment and Selection Policy**
- **S02 SEND Policy**
- **S05 Health and Safety Policy**
- **S09 Data Protection Policy**
- **S14 Pay Policy**
- **S25b Appraisal Policy - Teaching Staff and Headteachers** (*separate to S25a Appraisal Policy - Support Staff*)

These policies have been uploaded to the St Benet's website (<https://stbenets.org/about-us/policies/>) and circulated to academy Headteachers and offices earlier this week via iAM Compliant.

**HR12 Lone Working Policy has been incorporated in the updated S05 Health and Safety Policy and so is no longer required.**

If you have any queries, please do not hesitate to contact the Governance Team via the DoNESC Helpdesk.

**Tara Burrows**  
**Governance Officer/Trust Clerk**

## DoNESC News - new expense claim process

From 1<sup>st</sup> October, all expense claims will move to our new system, Ipplicit. This will replace the use of Capture Expense for claim submissions.

On Monday 22<sup>nd</sup> September, the Finance team will email a step-by-step process guide, along with supporting documents, to all central staff, Headteachers, SBMs and office email addresses. This information will be shared within your school.

While employees will still be able to log in to Capture Expense until the central contract ends, please note that the Finance processing team will no longer be monitoring it after 1st October. Any claims submitted through Capture Expense after this date will not be picked up or processed.

We thank you for your cooperation as we move to this improved system.

**Adam Clayton**  
Head of Finance

---

### **We are pleased to welcome Adam Clayton to the role of Head of Finance for DoNESC.**

Prior to joining DoNESC, Adam built his career in practice at LEES Accountants, where he supported a wide range of clients with VAT, year-end accounts, audits, and business advisory work. He is an ACCA finalist and continues to develop his skills in strategic reporting, financial management, and leadership.

In May 2025, he became a Trustee of the St John the Baptist CMAT, where he sits on the Audit and Risk Committee. These experiences have given him a strong blend of technical expertise and governance insight, which he is carrying forward into his role at DoNESC.

Adam now manages both the Management Accountant and Processing teams within DoNESC.



## Did you know...

St Benet's pays for all its employees to have free access to the Spectrum.Life employee wellbeing service. If you haven't registered yet, follow the simple instructions below to sign up online.



The online platform is accessible from this link:

<https://donesc.spectrum.life/login?org=DoNESC>

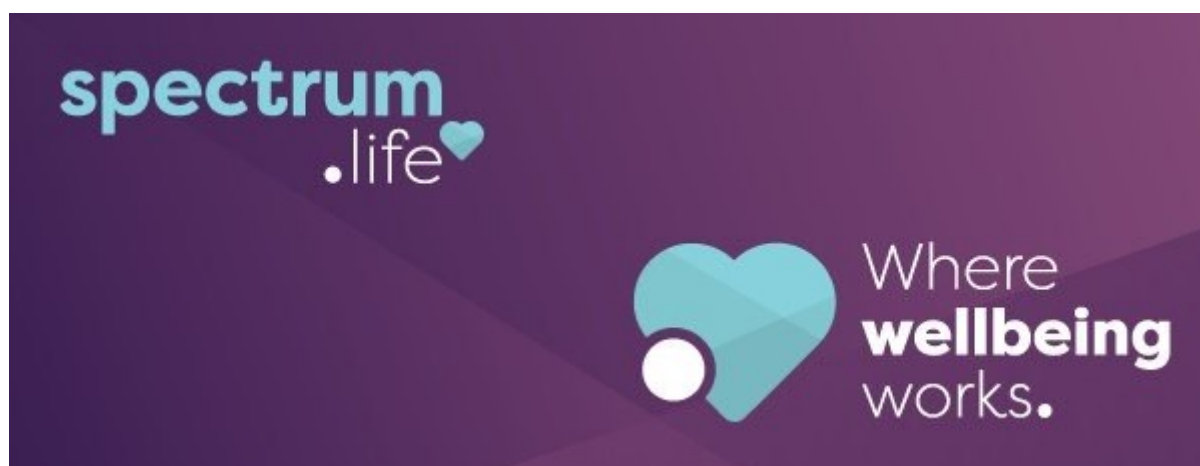
On the home page you will be asked to enter your name and email address, create a password and choose who you work for from a drop-down menu (you should choose St Benet's) and this will then take you through to the welcome page. If you download the app it will ask for your Organisation Code which is DoNESC. If you have any problems registering, please contact [wendy.allsop@donesc.org](mailto:wendy.allsop@donesc.org)

**The Spectrum.Life service also includes access to 6 free counselling sessions (virtual or face-to-face) via the Employee Assistance Programme, access to a Discount Marketplace, advice on fitness, nutrition and many articles, videos and audios around wellbeing.**

There are weekly running guides, advice on stress, diabetes, sleep, menopause, heart health, exercise videos and much more.

**B-Comms will focus on some of these specific areas in future issues and your Headteachers will be receiving some promotional material to share with you.**

**We encourage you to sign up and make use of Spectrum.Life; it's there for your benefit!**







# Our Values

## **Honesty** (n. Being honest; truthfulness)

*I have chosen the way of truth.*

Psalms 119:30

## **Courage** (n. Bravery, boldness)

*Have I not commanded you? Be strong and of good courage; do not be afraid, nor be dismayed, for the Lord your God is with you wherever you go.*

Joshua 1:9

## **Compassion** (n. A response to other people's suffering which goes beyond sympathy and is expressed in taking action to help)

*When Jesus saw the crowds, he had compassion on them, because they were harassed and helpless, like sheep without a shepherd.*

Matthew 9:36

## **Hope** (n. Expectation and desire combined; feeling of trust)

*But if we hope for what we do not see, we eagerly wait for it with perseverance.*

Romans 8:25